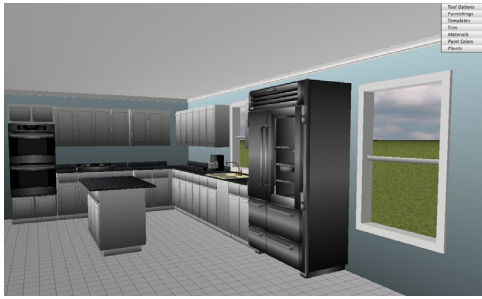


Interior Design II



Course Number: FI52

Recommended Max Enrollment: 25

Hours of Instruction: 135 (block)

Prerequisite: FI51 Interior Design I

This course prepares students for entry-level and technical work opportunities in the residential and non-residential interior design fields. Students deepen their understanding of design fundamentals and theory by designing interior plans to meet living space needs of specific individuals or families. Topics include application of design theory to interior plans and production, selection of materials, and examination of business procedures. Art and mathematics are reinforced. Work-based learning strategies appropriate for this course include cooperative education, entrepreneurship, internship, mentorship, school-based enterprise, service learning, and job shadowing. Apprenticeship is not available for this course. Family, Career and Community Leaders of America (FCCLA) competitive events, community service, and leadership activities provide the opportunity to apply essential standards and workplace-readiness skills through authentic experiences.

Check availability at your school here: <http://www.rockcte.org/CTE%20courses%202016-17e.pdf>



“Connecting your talents and interests with high wage and high demand careers.”



INTERIOR DESIGN II